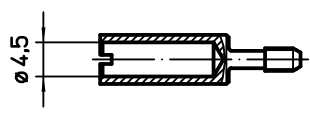
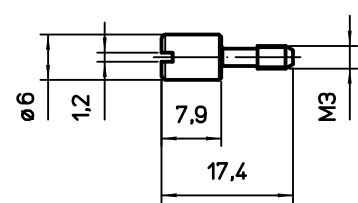
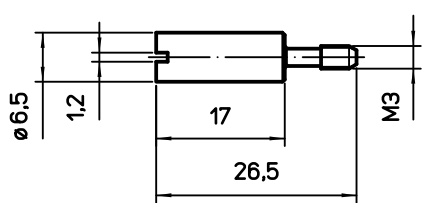
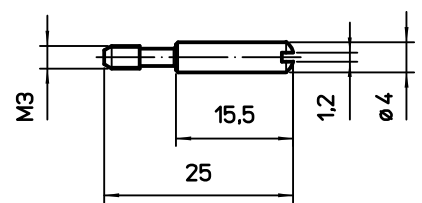


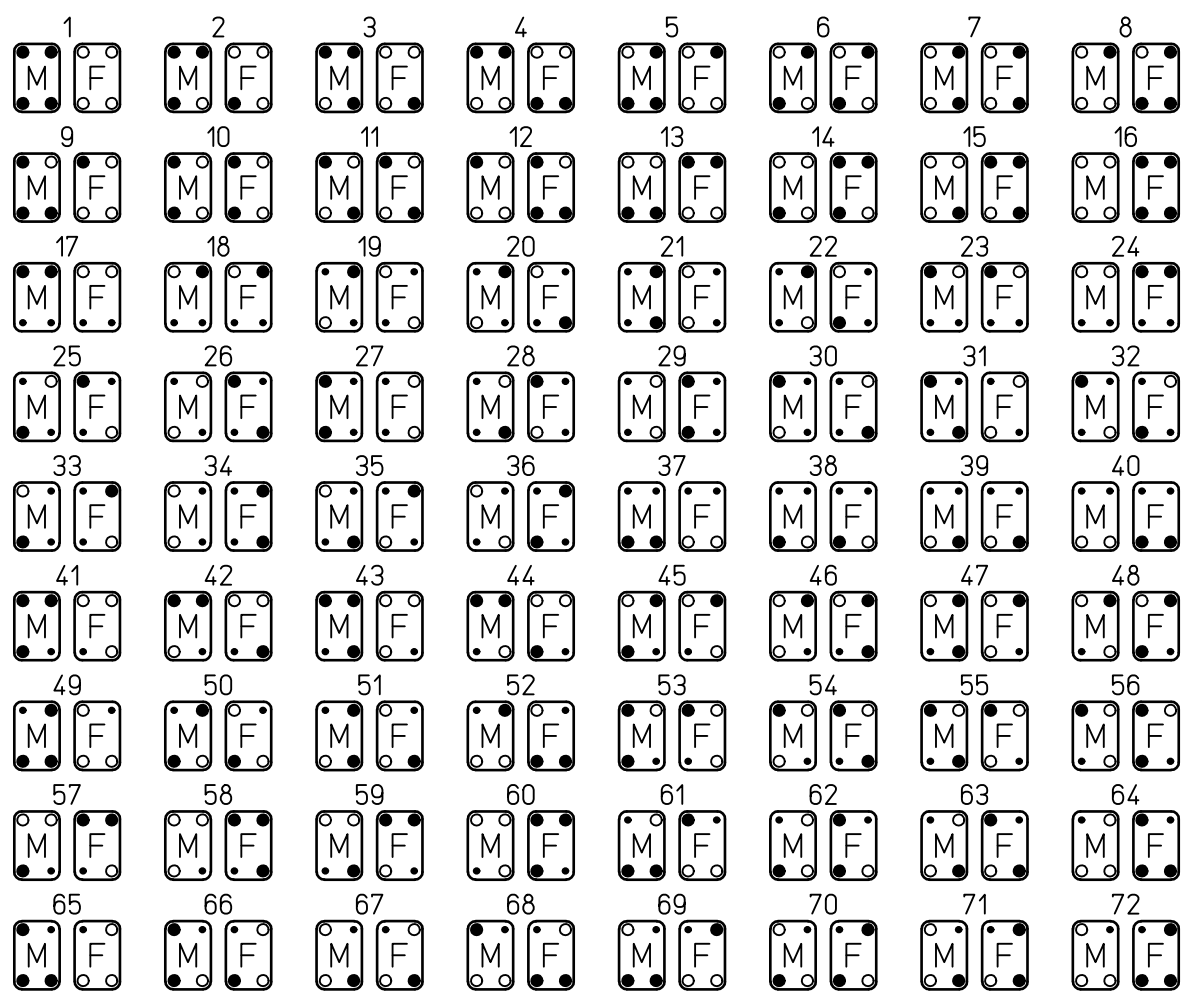
CRM/CRM D

CRF/CRF D

CR 72/CR 72 D



CODING OPTIONS USING THE THREE CODING PINS



- CRF/CRF D female coding pin
- CRM/CRM D male coding pin
- CR 72/CR 72 D single coding pin
- M male insert
- F female insert

Diritti riservati All rights reserved

REV.	DATE	SIGNATURE		
Dimensions in mm		Simplified representation with dimensions without tolerance		
Original Size A4		CR 72/CR 72 D		Scale
Date 27/05/21		Single coding pin, for 72 codings, stainless steel or zinc plated steel (D)		1:1
Sign. S. Diasparra				